



**X**melt<sup>®</sup>

**HME-500.** Get to the heart of hotmelt.  
Quick - precise - efficient.

## Electrical hotmelt guns of the HME series with Xmelt® InterActive technology

The HME-500 are particularly suitable for high production speeds with simultaneous high demands on accuracy and cleanliness. They combine the Baumer hhs competence from electromagnetically operated cold glue technology with the special features of hotmelt application.

The HME guns are extremely quick switching, free from wear and tear and maintenance friendly. Their compact design without compressed air connection and solenoid valve allows the installation even

in the smallest gaps. The use of high quality materials and ideal heat distribution not only guarantee long life but also optimum quality of the glue application.

The contact-free application of glue tracks up to fine fix points at the highest machine speeds opens new dimensions for the potential use of hotmelt application.

The HME-500 guns are an integrated part of the Xmelt® InterActive system. The internal communication not only makes opera-

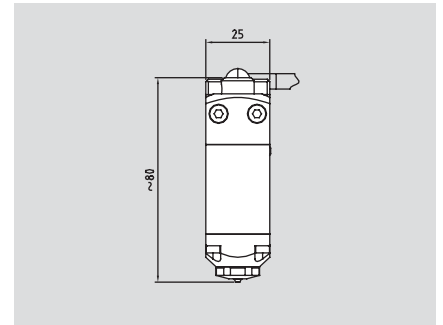
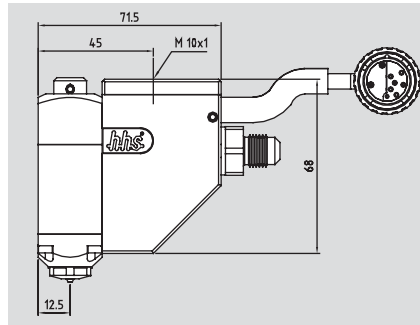
tion easier but also increases reliability and quality.

Two special designs complete the HME gun series:

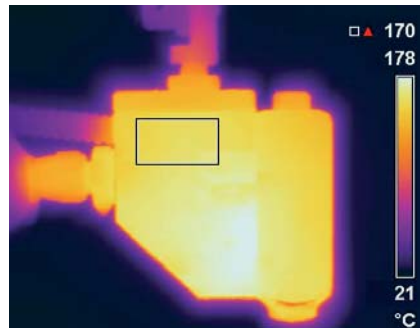
The HME-F hotmelt slot coating application head was designed for the application of remoistenable adhesives. The HME-IP design was optimised specifically for use in folding machines.

### HME-500

- Electrical opening, spring driven closing
- Extremely quick switching cycles of 400 Hz (24,000 cycles/minute)
- Dot application even at the highest machine speeds
- HME-500 guns apply dots where others can only apply lines
- Excellent tear off behaviour even at quick intervals
- Controllable dot-line switching
- Compact design
- No compressed air supply required, extremely silent
- Reliable due to high quality finish and materials
- Long life
- Easily accessible glue filters and seals
- Multiple heads also available due to modular design.
- Optimised heat distribution
- Suitable for glues with a viscosity of up to 3,000 mPa.s
- Extensive range of brackets
- Actuation by Baumer hhs controller or PLC



All specifications subject to change without prior notice.



### Technical data

Model	Temperature range	Operated voltage heating	Temperature monitoring	Switching frequency*	Connection	Hose connection	Glue viscosity	Glue pressure	Attachment
HME-500	0...200°C 32...392°F	Xmelt controlled	Pt 100	400 Hz and 24.000 cycles/min.	15 pole Xmelt plug	1/2" UNF	50 bar (725 PSI)	max. 3,000 m Pa.s	via top cover M10x1 thread

\* depending on nozzle size, glue, etc.

Further information and product advantages can be found under [www.xmelt.com](http://www.xmelt.com)

**Baumer**hhs

Baumer hhs GmbH

Adolf-Dembach-Straße 7 · 47829 Krefeld · Germany  
Phone +49 (0)2151 4402-0 · Fax +49 (0)2151 4402-111  
info.de@baumerhhs.com · www.baumerhhs.com