



**Xmelt**<sup>®</sup>

**HP-500.** The first dot is perfect.  
Quick and robust.

## Electro-pneumatic hotmelt guns of the HP series for track and dot application with Xmelt® InterActive technology

The innovative design with integrated solenoid valve provides quick intervals with medium and highly viscous glues and therefore closes the gap between robust electro-pneumatic guns on the one hand and the quick electrical guns on the other.

The powerful model with electro-pneumatic drive offers extremely long life, reliable operation, easy maintenance and

high cycle rates with perfect track tear off. The compact dimensions allow use even in constricted spaces.

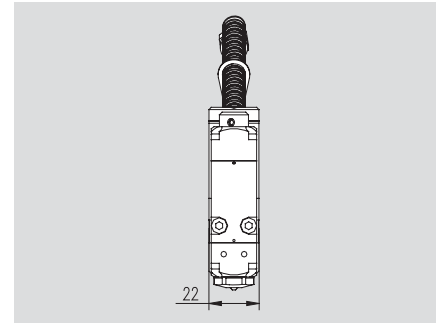
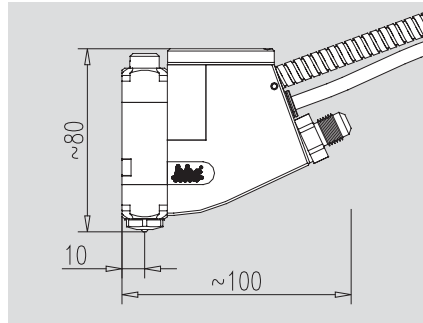
The unique combination of the features power and speed generate a multitude of new application options like contact-free dot and line application even of the most difficult special glues with high cycle packaging and print processing machines.

The HP-500 guns are an integrated part of the Xmelt® InterActive system and the internal communication not only makes operation easier but also increases reliability and quality.

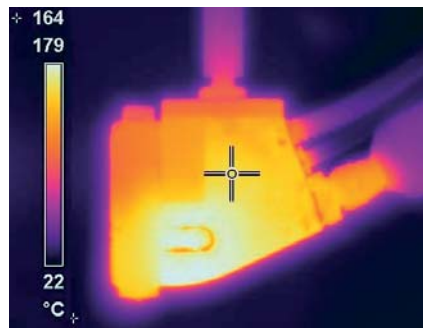
The HP-500-R for remoistenable adhesives completes the HP gun series.

### HP-500

- For line and dot application
- Reliable due to high quality materials and finish
- The first dot is perfect even after production stop
- Integration of the solenoid valve patent applied for
- Optimised heat distribution
- HP-500 guns apply dots where others can only apply lines
- Excellent tear of behavior even at quick intervals
- Low air consumption and silent
- Air driven opening and closing
- Easily accessible needle sealing
- For glues with a viscosity of up to 60,000 mPa.s
- Switching frequency 200 cycles/second, 12,000 cycles/minute
- Also multiple heads due to modular design
- Extensive range of brackets



All specifications subject to change without prior notice.



### Technical data

Model	Temperature range	Operated voltage heating	Temperature monitoring	Switching frequency*	Connection	Hose connection	Glue pressure	Glue viscosity	Control air	Attachment
HP-500	0...200°C 32...392°F	Xmelt controlled	Pt 100	200 Hz oder 12.000 cycles/min.	15 pole Xmelt plug	1/2" UNF	80 bar 1160 PSI	max. 60.000 m Pa.s	4...6 bar, 58-87 PSI oil free, dry	via top cover with M10x1 thread

\* depending on nozzle size, glue, etc.

Further information and product advantages can be found under [www.xmelt.com](http://www.xmelt.com)

**Baumer**hhs

Baumer hhs GmbH

Adolf-Dembach-Straße 7 · 47829 Krefeld · Germany  
Phone +49 (0)2151 4402-0 · Fax +49 (0)2151 4402-111  
info.de@baumerhhs.com · www.baumerhhs.com